

# Bjursås – the essence of Scandinavian scenery & activities

**BJURSÅS**  
BERG & SJÖ ÅRET RUNT

## Experience the heartland of Dalarna

Dalarna is often considered to be the region most typical for Sweden – and in the very heartland of Dalarna is Bjursås.

Within easy reach, but still with a feel of being remote. The calm and scenic surroundings. The typical Dala-red houses.

In the area are plenty of sights and activities. Many perceived to be among Sweden's finest and some even listed on UNESCO's list of world-heritages.

Welcome to our harmonic corner of the world. We hope it will leave a lasting impression.

Summer activities



# Enjoy the outdoors

The mountain, forest and lakes all offer a broad variety of activities in Bjursås. Year round and for the novice as well as the expert.

From slowly gliding in the canoe during an ever-bright summer evening or on the cross-country skis through the forest on a crisp winter day.

To enduring the most challenging trails on fully suspended mountain bike or ascending the mountain with ski-touring gear. All our paths and activities are well marked – so it is easy to find your level and way around. However, one of the most appreciated aspects of Bjursås is the beauty and calm. So, probably the most important activity is to just lean back, relax and enjoy the calm and scenic surroundings of Bjursås.

Winter activities



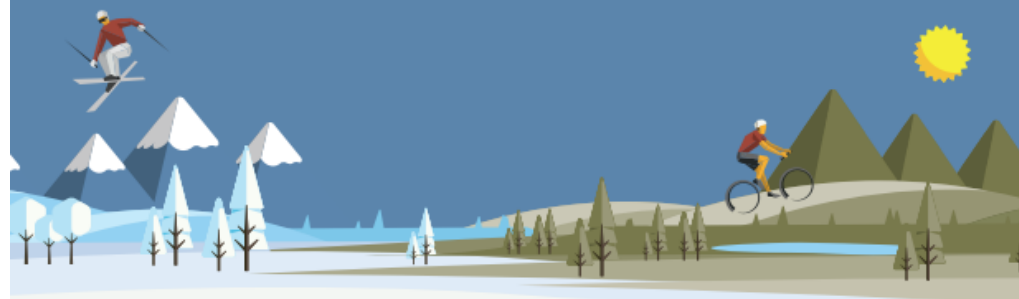
# Short travel – remote experience

## Easy access

Bjursås is situated only 250 km from Stockholm and Arlanda Airport.

## Versatile facilities

Bjursås has several restaurants that are open year round as well as a small spa open selected days. Accomodation is available in both well-kept cabins and camping-site by the lake-side. Equipment, boats etc are available to rent on site.



For booking or more information, please scan the QR-code or visit us at [bjursas.com](http://bjursas.com)



Printer friendly version  
(double-sided)





## Short travel – remote experience

### Easy access

Bjursås is situated only 250 km from Stockholm and Arlanda Airport.



### Versatile facilities

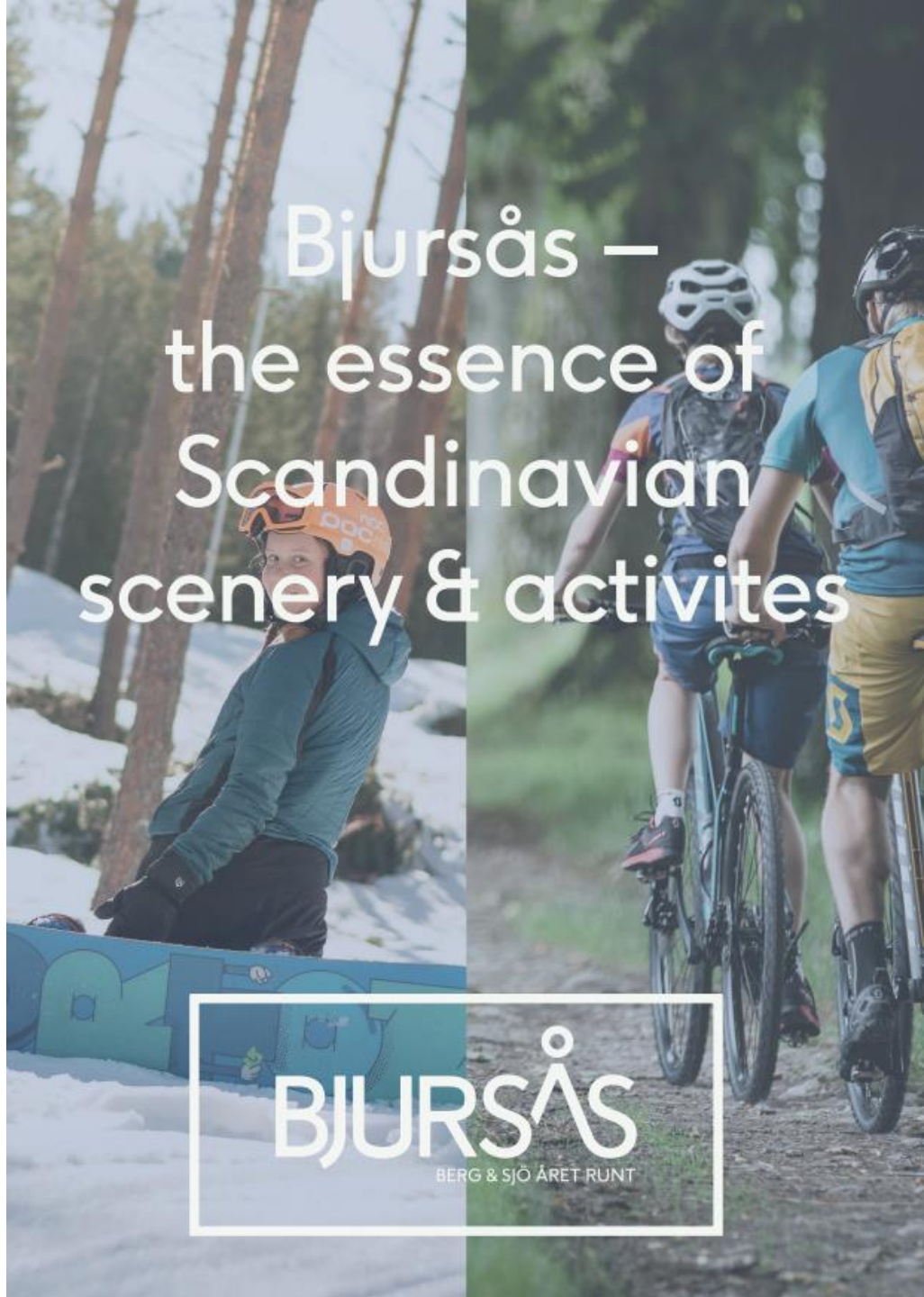
Bjursås has several restaurants that are open year round as well as a small spa open selected days. Accomodation is available in both well-kept cabins and camping-site by the lake-side. Equipment, boats etc are available to rent on site.



For booking or more information, please scan the QR-code or visit us at [bjursas.com](http://bjursas.com)



# Bjursås – the essence of Scandinavian scenery & activities



# Experience the heartland of Dalarna

Dalarna is often considered to be the region most typical for Sweden – and in the very heartland of Dalarna is Bjursås.

Within easy reach, but still with a feel of being remote. The calm and scenic surroundings. The typical Dala-red houses.

In the area are plenty of sights and activities. Many perceived to be among Sweden's finest and some even listed on UNESCO's list of world-heritages.

Welcome to our harmonic corner of the world. We hope it will leave a lasting impression.

Summer activities



# Enjoy the outdoors

The mountain, forest and lakes all offer a broad variety of activities in Bjursås. Year round and for the novice as well as the expert.

From slowly gliding in the canoe during an ever-bright summer evening or on the cross-country skis through the forest on a crisp winter day.

To enduring the most challenging trails on fully suspended mountain bike or ascending the mountain with ski-touring gear. All our paths and activities are well marked – so it is easy to find your level and way around. However, one of the most appreciated aspects of Bjursås is the beauty and calm. So, probably the most important activity is to just lean back, relax and enjoy the calm and scenic surroundings of Bjursås.

Winter activities

